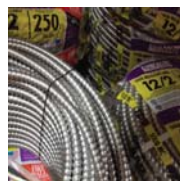




SINCE 1926

# Corporate Line Card



# VENDOR LISTINGS BY CATEGORY



## Electrical Products

### Boxes

Appleton  
Cantex  
Kraloy  
Pass & Seymour  
Raco  
Red Dot  
Steel City  
Wiremold

### Cable Management

Arlington  
Brady  
ERICO  
Panduit  
Thomas & Betts  
Waldom Electronics

### Cable Ties

3M  
Burndy / FCI  
Ideal  
NSI / Tork  
Panduit  
Thomas & Betts  
Waldom Electronics

### Cable Tray

Allied Electrical  
B-Line  
Thomas & Betts  
Wiremold

### Chemicals and Lubricants

3M  
American Polywater  
CRC  
Ideal  
Greenlee  
Ideal  
LPS Laboratories  
Thomas & Betts

### Conduit

Alflex  
Allied Electrical  
American Flexible Conduit  
Anamet  
Cantex  
Electri-Flex  
Indalex/Easco  
Kaf-Tech

Kraloy  
National Pipe  
Prime Conduit  
Queen City Plastics  
Republic Conduit  
Southwire  
Thomas & Betts  
Western Tube  
Wheatland Tube

### Distribution Equipment

Cutler-Hammer  
General Electric  
Murray Electrical  
Siemens

### Duct

Panduit  
Pass & Seymour  
Thomas & Betts  
Waldom Electronics

### Enclosures

B-Line  
Hammond Mfg.  
Hoffman  
Wiegmann

### Fasteners

B-Line  
Caddy  
Metallics  
Minerallac  
Thomas & Betts

### Fittings

Appleton  
Arlington  
Bridgeport  
Crouse-Hinds  
Killark  
M&W Electric  
Ocal  
OZ Gedney  
Raco  
Steel City

### Fittings - Hazardous

Appleton  
Crouse-Hinds  
Killark  
OZ Gedney

## Flashlights & Batteries

Spectrum Brands  
Waldom Electronics

## Fuses & Fuse Blocks

Bussman  
Littelfuse  
Mersen (Ferraz Shawmut)  
Waldom Electronics

## Ground Rods

ERICO  
Galvan

## Home Systems

Broan  
Nutone  
Pass & Seymour

## Lugs

Burndy / FCI  
NSI / Tork  
Panduit  
Thomas & Betts

## Poke Thru Fittings

Hubbell WD  
Thomas & Betts  
Wiremold

## Portable Power Products

Coleman Cable  
Woodhead Molex

## Power Conditioning

Acme Electric  
Leviton  
Sola/Hevi Duty

## Power Supplies

Acme  
Sola/Hevi-Duty

## Safety Products

3M  
BRK Brands  
Firex  
GE Security (Edwards)  
Grace Construction  
Kidde

## Strut

Allied Electrical

B-Line  
Hubbell WD  
Panduit  
Steel City  
Wiremold

## Surface Raceway

Hubbell WD  
Leviton  
Panduit  
Thomas & Betts  
Wiremold

## Switches

Intermatic  
Midwest Electric  
Pass & Seymour  
Raco  
Selecta Products

## Surge Suppression & UPS

Intermatic  
JDI Technologies  
Leviton  
Pass & Seymour  
Sola/Hevi-Duty

## Tape, Shrink Tubing, Insulating Products

3M  
American Polywater  
Burndy  
NSI / Tork  
Panduit  
Thomas & Betts

## Testing Equipment

Fluke  
Greenlee  
Ideal  
National Meter Industries

## Terminal Blocks

Burndy  
Bussman  
Mersen (Ferraz Shawmut)  
Rockwell Automation  
Siemens  
Thomas & Betts  
Waldom Electronics

## Tools - Hand & Power

DeWalt

# Contractors

# Automation

Greenlee Textron  
Ideal Industries  
Klein  
Milwaukee  
Paladin

Brady  
Panduit  
Thomas & Betts

**Wire Mesh Grips**  
Hubbell WD  
Pass & Seymour  
Raco  
Thomas & Betts  
Woodhead / Molex

**Light Poles**  
Gardco, Emco, McPhil.

**Occupancy Sensors**  
Leviton  
Pass & Seymour  
Watt Stopper

**Photocontrols**  
Intermatic  
Leviton  
NSI / Tork  
Pass & Seymour

## Lighting Products

**Ballasts**  
Philips / Advance  
NSI / Tork

**Fixtures**  
Atlas  
Chloride Systems  
Crescent - Stonco  
Crouse-Hinds  
Day-Brite Lighting  
Elk Lighting  
Exceline  
Hadco  
Hubbell Lighting  
Intermatic  
James R Moder  
Juno Lighting Group  
Kichler Lighting  
Killark  
Ledalite Architectural  
Lightolier  
Lumec  
NSI

Progress Lighting  
RAB Lighting  
StyllICON  
Thomas Lighting  
Veolia  
Waldom Electronics  
Westinghouse  
Wide-Lite  
Woodhead / Molex

**Lamps**  
Eiko America  
Osram Sylvania  
Philips  
Shat-R-Shield  
Westinghouse

## Transformers

Acme  
Hammond Power  
Siemens  
Sola/Hevi-Duty

## Ventilation Equipment

Broan / Nutone  
Emerson Electric  
Marley Engineered  
TPI Corporation

## Wire, Cable, Cord

A. F. C.  
Aetna  
Alcan Cable  
American Insulated  
Coleman Cable  
Encore Wire  
General Cable  
Houston Wire & Cable  
Kaf-Tech  
King Wire  
Omni Cable  
Priority Wire & Cable  
Senator Wire & Cable  
Southwire  
Waldom Electronics

## Wiring Devices

Hubbell WD  
Leviton  
Pass & Seymour  
Woodhead / Molex

## Wire Connectors

3M  
Burdny / FCI  
Ideal Industries  
NSI / Tork  
Panduit  
Thomas & Betts  
Waldom Electronics  
Woodhead / Molex

## Wire Markers

3M



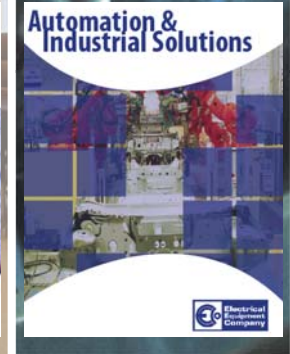
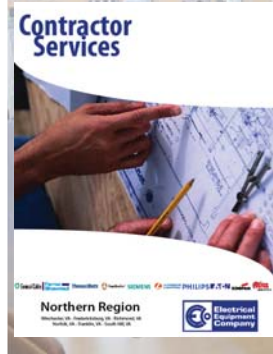
## Don't see your preferred brand?

Many distributors don't offer an honest listing of vendors that are actually stocked in their warehouse. EECO supplies countless vendors, but prefers to list the brands that we strongly dedicate inventory to. Ask your local branch about any brand you don't see listed - chances are it could already be in stock!

**\*Note that not all manufacturers are available at every branch.**

Eleven branches serving up contractor-specific services from the counter, like rush order filling and supply guarantees. Find out more in your local Contractor Services line card.

Our diverse automation portfolio offers different partnerships on a regional basis. Ask your sales rep for a copy of your local Automation line card for vendor listings and specialized services.



# Management Solutions Group

A DIVISION OF ELECTRICAL EQUIPMENT COMPANY

Introducing a new way to manage your inventory - the iMan group has a VMI program that offers several different levels of service, from basic routine deliveries and counts to completely automated and internet-based solutions. Ask your sales rep for information today!

# VENDOR LISTINGS ALPHABETICALLY

3M	Eaton (Cutler-Hammer)	Killark	Prime Conduit
A. F. C.	EiKO America	King Wire	Priority Wire & Cable
Acme Electric	Electri-Flex	Klein	Progress Lighting
Aetna	Elk Lighting	Kraloy / Multi Fittings	Queen City Plastics
Alcan Cable	Emerson Electric	Ledalite	RAB Lighting
Alflex	Encore Wire	Leviton	RACO
Allied Electrical	ERICO	Lightolier	Rayovac
American Insulated	Exceline	Littelfuse	Red-Dot
American Polywater	Firex	Louisville Ladder	Republic Conduit
Anamex	Galvan Industries,	LPS Laboratories	Rockwell Automation
Appleton	Gardco, Emco, McPhil.	Lumec	Selecta Products
Arlington Industries	General Electric	M&W Electric	Senator Wire & Cable
Atlas Lighting	GE Security	Marley Engineered	Shat-R-Shield
Black & Decker/DeWalt	General Cable	Mersen (Ferraz Shawmut)	Siemens
B-Line	Grace Construction	Metallics	Siemens Energy
Brad Harrison	Greenlee Textron	Midwest Electric	Sola/Hevi-Duty
Brady	Hadco	Milbank	Southwire
Breakers Unlimited	Hammond Mfg.	Milwaukee Tool	StyllICON
Bridgeport Fittings	Hammond Power	Minerallac / Cully	Thomas & Betts
BRK Brands	Hoffman Enclosures	Murray Electrical	Thomas Lighting
Broan / Nutone	Houston Wire & Cable	National Meter Ind.	TPI Corporation
Burndy FCI	Hubbell Lighting	National Pipe	Unistrut
Bussmann	Hubbell WD	Nova Hand Dryer	Veolia
California Breakers	Hubbell Wiegmann	NSI / Tork	Waldom Electronics
Cantex	Ideal Industries	OCAL	Watt Stopper
Carlson	Indalex/Easco	Omni Cable	Werner
Chloride Systems	Intermatic	Osram Sylvania	Western Tube
Coleman Cable	James R. Moder	OZ-Gedney	Westinghouse
Conduit Pipe Products	JDI Technologies	Paladin	Wheatland Tube
CRC Industries	Juno Lighting Group	Panduit	Wide-Lite
Crescent/Stonco	Kaf-Tech	Pass & Seymour	Wiremold
Crouse-Hinds	Kichler Lighting	Philips Lighting	Woodhead / Molex
Day-Brite Lighting	Kidde	Picoma	

**\*Note that not all manufacturers are available at every branch.**



1431 Marvin Griffin Rd.  
Augusta, GA 30906  
706.722.6685

175 Lott Ct.  
West Columbia, SC 29169  
803.714.5500

7269 Cross Park Dr.  
N. Charleston, SC 29418  
843.628.1004

6900 A International Dr.  
Greensboro, NC 27409  
336.230.1120

226 North Wilkinson Dr.  
Laurinburg, NC 28352  
910.276.2141

1440 Diggs Dr.  
Raleigh, NC 27603  
919.828.5411

141 Commerce Park Rd.  
Franklin, VA 23851  
757.569.8161

4617 Mine Rd.  
Fredericksburg, VA 22408  
540.891.8828

802 Bluecrab Rd.  
Newport News, VA 23606  
757.320.1090

3798 Village Ave.  
Norfolk, VA 23502  
757.857.1100

1807 Boulevard West  
Richmond, VA 23230  
804.353.7841

625 Lombardy St.  
South Hill, VA 23970  
434.447.7121

206 West Wyck St.  
Winchester, VA 22601  
540.678.9000

**800.993.EECO**  
**www.eeco-net.com**

